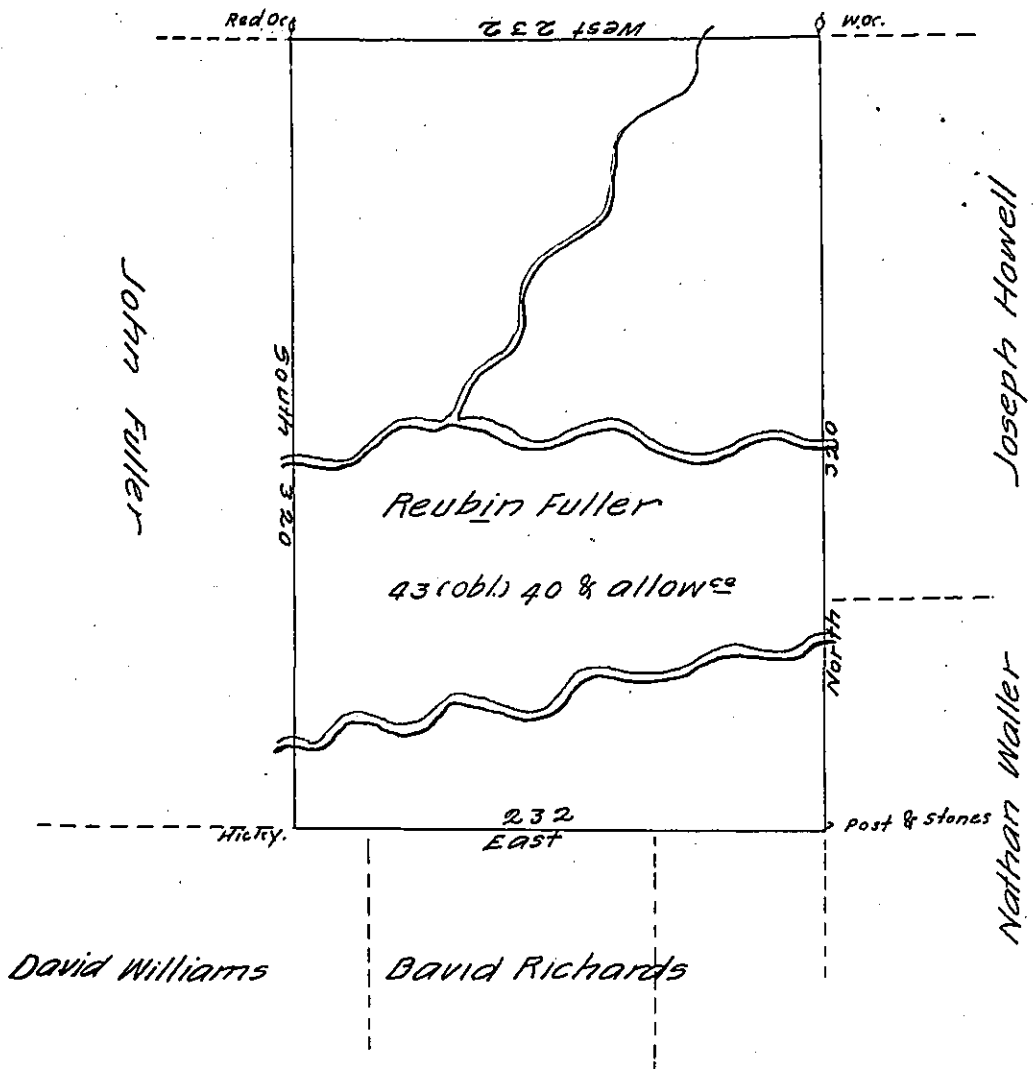


Adam Guier's Land



A Draft of a tract of land called \_\_\_\_\_ situate on the Waters of big Wappaloppin Creek about 1/2 mile West of the Warriors path in the County of Luzerne containing four hundred and thirty seven (obl.) and Allowance of six p. Cent & c. surveyed for Reuben Fuller the 11<sup>th</sup> day of Dec<sup>r</sup> 1792 in pursuance of a Warrant dated the 13<sup>th</sup> Day of August 1792.

by W<sup>m</sup> Gray D.S.

Daniel Brodhead Esq<sup>r</sup> }  
 Survey Gen<sup>l</sup> }

IN TESTIMONY that the above is a copy of the original remaining on file in the Department of Internal Affairs of Pennsylvania, made conformably to an Act of Assembly approved the 16th day of February, 1833, I have hereunto set my Hand and caused the Seal of said Department to be affixed at Harrisburg, this seventeenth day of January 1905

*Loac B. Ross*  
 Secretary of Internal Affairs.